



*A Rimkus Company*



# Global Insurance Profile

---

**TIMELINE, COST & FORENSIC  
ENGINEERING EXPERTS**

# CONTENTS

- About CCI ..... 1
- Our Sectors..... 2
- Our Insurance Services ..... 3
- Delay and Timeline..... 4
- Project Monitoring and Risk Advisory ..... 5
- Failure Analysis and Damage Assessment..... 6
- Scope Evaluation and Reinstatement Cost Verification ..... 7
- Our People ..... 8
- Selected Project Experience
  - Delay and Timeline ..... 9
  - Project Monitoring and Risk Advisory ..... 12
  - Failure Analysis and Damage Assessment ..... 14
  - Scope Evaluation and Reinstatement Cost Verification..... 17
- Contact Us..... 18

## ABOUT CCI

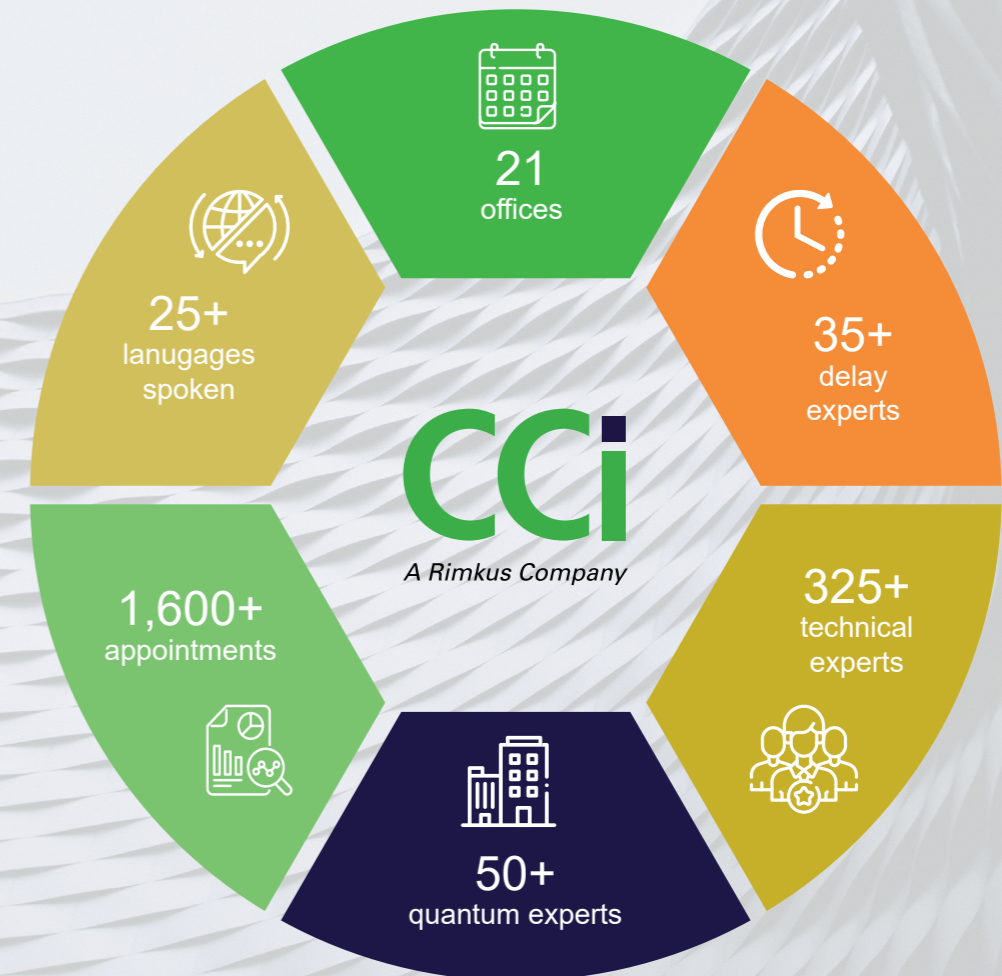
CCI is a market leader in providing time, cost, and forensic engineering services to global insurance markets.

For decades, our professionals have provided expert analysis on some of the largest and most complex construction, engineering, energy, power, and property claims around the world.

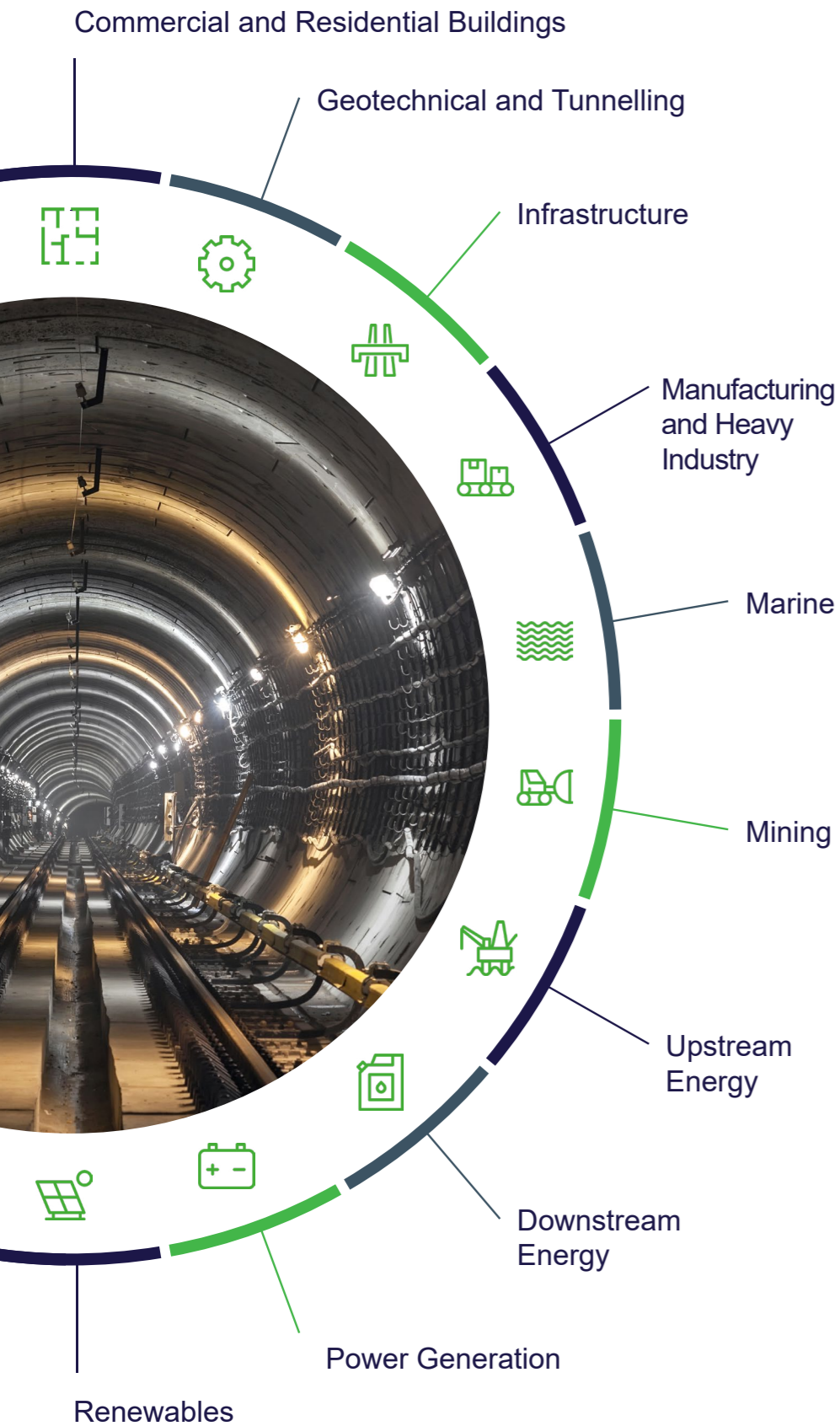
As part of our global insurance services, we are able to provide time, cost, and technical skills through a single, integrated team to deliver relevant, efficient, and dependable services for our valued clients.

Investigating engineering issues and quantifying the time and cost impacts requires deep industry knowledge and a clear understanding of complex causes and effects, as well as an appreciation of the nuances of the claims adjustment process. That's where we are uniquely placed across a global platform.

Our insurance services provide a targeted and strategic response, liaising with all relevant parties involved, to comprehensively analyse the circumstances of any event or claim, the scope of damage and the associated impact in terms of reinstatement time and cost.



# OUR SECTORS



## Commercial and Residential Buildings

Our experts have supported clients on projects ranging from racecourses to football stadiums, shopping malls to whole town centre redevelopments, individual housing to large-scale commercial and specialised medical facilities.

## Geotechnical and Tunnelling

CCi has assisted clients on complex ground and underground projects ranging from investigation, remediation and reclamation works to pipelines and tunnels in land, river and sea environments.

## Infrastructure

Our experts have worked on multiple complex infrastructure projects including bridges and airports, roads and rail services.

## Manufacturing and Heavy Industry

Our experts have been appointed to assess claims and disputes relating to major manufacturing and industrial facilities.

## Marine

CCi has worked on a wide variety of vessel related claims and disputes, with shipbuilding being at the core of this sector for some time.

## Mining

Our multidisciplinary team of experts can provide timeline, cost and engineering advice on every type of complex mining-related project imaginable, helping clients to manage risk and quantify claims.

## Upstream Energy

Our experts have worked on many offshore oil and gas facilities and have experience in the construction of FPSO and FLNG vessels, semi subs, drilling ships and marine support vessels.

## Downstream Energy

Our experts have firsthand experience in refineries, petroleum plants, DSU, BI, and other downstream facilities as well as production and energy generating facilities onshore utilising downstream technologies.

## Power Generation

Our team has provided advice on distressed projects and are often instructed to evaluate delays and overrun costs on coal, gas, oil and nuclear power generation facilities.

## Renewables

We have assisted clients across the entire lifecycle of a wide variety of wind power, hydro, biomass and solar renewable disputes worldwide.

For more info scan here:



# OUR INSURANCE SERVICES



Delay Analysis (DSU)



Risk Advisory



Damage Assessment



Timeline Analysis (BI)



Failure Analysis



Project Monitoring



Scope Evaluation



Reinstatement Cost Verification



Risk Advisory

# DELAY AND TIMELINE

Our forensic timeline analyses are internationally recognised for prompt and efficient delivery of clarity to Delay in Start-Up (DSU) and Business Interruption (BI) claims of the highest value and complexity.

## Delay Analysis (DSU)

Having advised on over 500 DSU claims globally, including the world's largest and most complex claims, our experts have unrivalled experience in the analysis of Delay for projects carrying DSU.

Launching a new project is a complex endeavour that involves numerous stakeholders, intricate processes, and tight deadlines.

Unfortunately, unforeseen delays can significantly impact the time-to-market and result in missed opportunities and financial losses. However, assessing Delay as a matter of indemnity requires a specialist approach.

Our DSU service is designed specifically for the insurance industry, to help clients determine when commercial operations would have commenced had no insured events occurred.

Many clients use our services in advance of a submitted DSU claim to establish accurate decision-making for loss mitigation, formulate potential exposure considerations, and create the foundations for a successful resolution.

Our expert delay analysts regularly advise on:

- Pre-incident project status
- Consideration of mitigation measures and Increased Cost of Working (ICOW) claims
- Verification of critical path and near critical work packages
- Impact of float and concurrent delays
- Policy endorsements
- Relationship between CAR / EAR and marine cargo policy forms
- Potential implications of defect exclusions and LEG clauses

## Timeline Analysis (BI)

For more than 25 years, CCI has delivered time element services on many of the world's largest operational insurance losses across numerous industries.

Our time, cost, and technical experts have comprehensive knowledge spanning all types of industries and provide the support and insight to expedite any reinstatement project and reduce the risk of extended interruption or business downtime.

Scheduling specialists objectively identify a reasonable reinstatement / repair period whilst clearly defining time associated with planned or opportunistic turnaround / maintenance works, and any upgrade or betterment works.

**We confirm to policyholders and insurers the most cost-effective ways to minimise loss and ensure transparency for all parties.**

In our experience, time element services work best when integrated with cost and technical expertise to fully leverage mitigation strategies.

This approach can take advantage of the links between these disciplines, resulting in accurate and agile decision-making on technical engineering solutions, cost breakdowns, and time management.

# PROJECT MONITORING AND RISK ADVISORY

Our highly skilled teams assess the progress of clients' projects to ensure all involved parties understand its status.

## Project Monitoring

An industry leading monitoring and progress review service.

**We can accurately and cost-effectively monitor and benchmark progress on fast-moving projects where cost and scope are determined in real time.**

Robust and detailed monthly or quarterly progress reports are provided on pre-loss DSU construction projects. These are easy to implement, are standardised utilising the project's existing progress records, and can be combined with the monitoring requirements of lenders and funders.

As part of our monitoring service, CCI can provide bespoke Quantitative Risk Analysis (QRA). We generate project performance models based on the latest available project data, with the model continually updating as the performance of the project varies over its lifecycle. This performance model accurately describes the changing dynamics experienced in the multivariate situations present throughout project construction. These models are then used to create a probabilistic outcome of expected activity / project completion, via a Monte Carlo method. This process generates a continuous distribution of outcomes each with a specified probability of occurrence, giving a statistical indicator of project performance such as target project completion date.

## Risk Advisory

With a broad range of industry experts, CCI offers efficient and timely advice on multi-industry risks.

Our services range from independent, third-party expert reviews, to underwriter information reports and estimated / probable maximum loss analysis.

**We assist clients to quantify and gain a deeper understanding of the potential financial impact of extreme events.**

This analysis enables them to make data-driven decisions, optimise risk transfer strategies, and ensure that insurance coverage adequately protects against severe losses.

We also conduct in-depth risk assessments and analyses, considering factors such as regulatory compliance, market trends, emerging technologies, and operational vulnerabilities. By understanding the unique risks our clients face, we can provide tailored solutions to protect their business interests.

Our risk advisory services encompass the development and implementation of proactive risk mitigation strategies. We assist you in designing comprehensive risk management frameworks, establishing risk appetite and tolerance levels, and implementing best practices that align with industry standards and regulations.

# FAILURE ANALYSIS AND DAMAGE ASSESSMENT

CCi provide forensic and consulting engineering services to establish failure mechanisms in the course of root cause investigations and assessing the resultant extent of damage.

## Failure Analysis

At CCi, we specialise in providing comprehensive failure analysis services tailored to the unique needs of insurance providers.

When a failure occurs, it is crucial to identify the underlying root causes accurately. We employ a systematic approach to investigate incidents, examining all relevant factors such as design flaws, manufacturing defects, human error, environmental factors, or external influences.

**We conduct thorough investigations, utilising cutting-edge techniques and industry best practices to uncover the root causes of failures.**

We understand the importance of data in failure analysis. Our team meticulously collects and analyses data related to the failure event, leveraging advanced analytical tools, and techniques. We assess relevant documentation, conduct interviews, gather physical evidence, and perform laboratory tests as needed.

This comprehensive approach ensures a robust understanding of the failure mechanism and provides actionable insights for risk mitigation.

We then work closely with the client's team to formulate tailored solutions that address the underlying issues and minimise the potential for future failures. Our recommendations encompass a range of areas, including design improvements, process optimisation, enhanced quality control measures, and staff training programs.

In cases where legal or regulatory proceedings arise from a failure event, our team of experts can provide reliable and credible expert witness testimony. We have extensive experience in supporting insurance providers in litigation and dispute resolution processes. Our experts possess the technical expertise and communication skills necessary to present complex failure analysis findings in a clear and persuasive manner.

## Damage Assessment

Our team conduct rigorous inspections of the affected property or asset, meticulously examining the damage and assessing the extent and nature of the loss. Understanding the urgency of these situations, we strive to conduct inspections promptly, ensuring that loss reserves can be established and the adjustment process can begin without unnecessary delays.

We employ advanced tools and techniques such as heat mapping, metallurgical analysis, and other non-destructive testing techniques to capture detailed information about the damages, gather photographic evidence, collect relevant measurements, and document the condition of the affected areas or assets. This meticulous documentation serves as a reliable basis for claim evaluations and facilitates efficient communication with all stakeholders involved.

**Our reports provide a comprehensive analysis of the assessed damages, presenting clear and concise information to loss adjusters, insurers, and policyholders.**

Our reports highlight the extent of the damage and provide reinstatement options covering items requiring replacement and where possible those assets that can undergo repair.

We cover a wide range of damages, including but not limited to property damage, equipment breakdown, natural disasters, fire incidents, water damage, and more. With our diverse expertise, we can accurately assess damages across different industries and sectors, providing valuable insights regardless of the nature or complexity of the claim.

# SCOPE EVALUATION AND REINSTATEMENT COST VERIFICATION

Our team of professionals can establish the extent of damage and costs of reinstatement with accuracy and certainty.

## Scope Evaluation

In the immediate aftermath of a catastrophic event, CCi's scope evaluation service offers considerable benefit to insurers, loss adjusters, and policyholders in response to large and complex claims.

**In the days after a loss occurs, CCi's accredited estimators and cost engineers will generate initial rough orders of magnitude, developing through to more detailed estimates as the scope of damage evolves, and contractor tender documentation is received.**

Our service utilises industry recognised estimating software, commonly utilised by all major operators/owners. In the right hands, this software develops estimates to support conceptual design analysis, detailed FEED studies, pre-tender CAPEX approval/budgeting, and bid/tender benchmarking across an array of assets.

CCi's scope evaluation service provides a "ground up" estimate of the reinstatement cost, enabling loss adjusters and insurers to review relevant policy terms by identifying specific elements of reinstatement for the consideration of applying sub-limits, exclusions etc, providing a more stable and consistent scenario for reserving purposes, whether that is initial placeholders for precautionary IBNR or case reserves in a 45-, 90-, or 180-day window.

For many catastrophic events, a fully developed operational design will exist, along with information such as detailed equipment lists and operational parameters. In fact, most of the material contained within a detailed underwriting submission is all that is needed for CCi's estimators to immediately start developing an early cost estimate, alongside considerations for demolition/removal or wreck, allowing the process to be significantly fast-tracked.

## Reinstatement Cost Verification

CCi's team of professional quantity surveyors/cost consultants, estimators, and engineers conduct an in-depth analysis to provide reliable assessments of reinstatement costs, covering replacement and repair costs. Where required, we will conduct economic assessments of replacement versus repair, particularly relevant against Business Interruption/DSU exposures, working with stakeholders to determine the most effective repair strategy.

Throughout the reinstatement period, our chartered cost experts can assist in verifying actual costs incurred and, where necessary, delineate costs attributable to damage reinstatement from costs that may be related to maintenance, turnaround, betterment, upgrade, or other potentially non-indemnifiable items. As well as assessing the overall cost of reinstating physical damage, we have significant experience with identifying and verifying increased costs of working, additional increased costs of working, expediting expenses, prolongation costs, and costs associated with defect rectification and/or improvement.

Where required, we have a number of cost experts with significant experience in providing expert testimony who regularly advise our clients through contentious matters, including those related to professional indemnity and product liability.

**We document our findings in clear and transparent reports that provide a comprehensive analysis of reinstatement costs in a format that can be readily shared with all stakeholders providing an enhanced claims experience and an expedited resolution.**

# OUR PEOPLE

## — A PASSIONATE TEAM —

Our people are our strength, so we focus on employing the leading practitioners of today and developing the brightest talent of the future. We have a growing team of professionals that bring a broad range of industry expertise to our business, across our core areas of insurance claims and dispute resolution on construction, engineering and energy projects.

We empower our people. Our team say they have a strong sense of accountability, which spurs them on to succeed further. Working together and getting the best minds around the table is what it's about.

“ ENJOYING YOUR WORK LEADS TO PERFECTION ”

- ARISTOTLE



# SERVICE >> DELAY AND TIMELINE



## 37-STORY OFFICE TOWER

📍 Malaysia

Client: Insurer  
Sector: Commercial / Residential Buildings  
Service: DSU Analysis



## 17-ACRE MIXED-USE DEVELOPMENT

📍 United States

Client: Insurer  
Sector: Commercial / Residential Buildings  
Service: DSU Analysis



## WASTEWATER TUNNELLING PROJECT

📍 United States

Client: Insurer  
Sector: Infrastructure  
Service: DSU Analysis



## POULTRY RENDERING FACILITY

📍 United States

Client: Insurer  
Sector: Manufacturing / Heavy Industry  
Service: BI Timeline Analysis

Images shown are for illustration purposes only and may not be an exact representation of the projects.



### NATURAL PORT

📍 Gibraltar

Client: Insurer  
Sector: Manufacturing / Heavy Industry  
Service: BI Timeline Analysis



### DUBAI ALUMINUM

📍 United Arab Emirates (UAE)

Client: Insurer  
Sector: Manufacturing / Heavy Industry  
Service: DSU Analysis



### GOLD MINE

📍 Ghana

Client: Insurer  
Sector: Mining  
Service: BI Timeline Analysis



### NICKEL MINE

📍 South Pacific

Client: Insurer  
Sector: Mining  
Service: BI Timeline Analysis



### REVERSE OSMOSIS DESALINATION PLANT

📍 Oman

Client: Insurer  
Sector: Manufacturing / Heavy Industry  
Service: DSU Analysis



### WIND FARM PROJECT

📍 Jordan

Client: Insurer  
Sector: Renewables  
Service: DSU Analysis



### POLYPROPYLENE MANUFACTURING FACILITY

📍 Kingdom of Saudi Arabia (KSA)

Client: Insurer  
Sector: Oil and Gas  
Service: BI Timeline Analysis



### FPSO

📍 North Sea

Client: Insurer  
Sector: Offshore Exploration and Production  
Service: DSU Analysis

Images shown are for illustration purposes only and may not be an exact representation of the projects.

# SERVICE » PROJECT MONITORING AND RISK ADVISORY



## OTOYOL PHASE I & II

📍 Turkey

Client: Insurer  
Sector: Infrastructure  
Service: Project Monitoring



## JAMNAGAR J3

📍 India

Client: Insurer  
Sector: Oil and Gas  
Service: Project Monitoring



## MAJOR COMMERCIAL SOLAR INSTALLATION

📍 Saudi Arabia

Client: Renewables  
Sector: Infrastructure  
Service: Project Monitoring



## EAST ANGLIA ONE, 714MW OFFSHORE WINDFARM

📍 United Kingdom

Client: Insurer  
Sector: Renewables  
Service: Project Monitoring



## FREEPORT LNG

📍 Texas, United States

Client: Insurer  
Sector: Oil and Gas  
Service: Project Monitoring



## 2012 OLYMPICS STADIUM

📍 London

Client: Insurer  
Sector: Infrastructure  
Service: Project Monitoring



## NEUCONNECT, 720KM, 1.6KW INTERCONNECTOR CABLE

📍 North Sea

Client: Insurer  
Sector: Renewables  
Service: Risk Advisory



## HORNSEA II OFTO ASSETS WIND FARM

📍 North Sea

Client: Broker  
Sector: Renewables  
Service: Risk Advisory

Images shown are for illustration purposes only and may not be an exact representation of the projects.



# SERVICE » FAILURE ANALYSIS AND DAMAGE ASSESSMENT



## OFFSHORE GAS TURBINE

📍 Vietnam

Client: Insurer  
Sector: Offshore Exploration and Production  
Service: Failure Analysis



## WIND TURBINE COLLAPSE

📍 Australia

Client: Insurer  
Sector: Renewables  
Service: Failure Analysis



## SOLAR PV FARM

📍 Arizona, USA

Client: Insurer  
Sector: Renewables  
Service: Failure Analysis



## TRANSFORMER FAILURE

📍 North Africa

Client: Insurer  
Sector: Oil and Gas  
Service: Failure Analysis



## MINERAL STORAGE DOME COLLAPSE

📍 Chile

Client: Insurer  
Sector: Mining  
Service: Failure Analysis



## BUILDING COLLAPSE

📍 Hong Kong

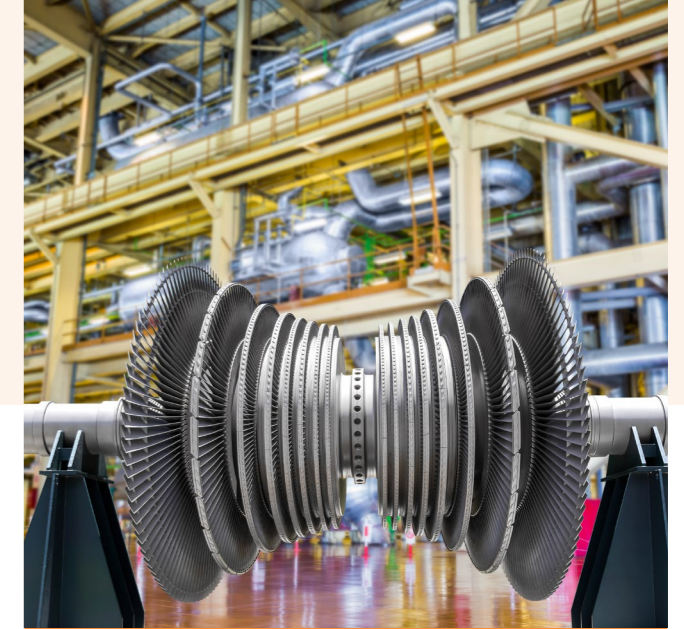
Client: Insurer  
Sector: Construction  
Service: Failure Analysis



## REFINERY OIL SPILL

📍 Kenya

Client: Insurer  
Sector: Oil and Gas  
Service: Failure Analysis



## STEAM TURBINE CONDENSER FAILURE

📍 Bahrain

Client: Insurer  
Sector: Power  
Service: Failure Analysis

Images shown are for illustration purposes only and may not be an exact representation of the projects.



### PETROLEUM PROCESSING FACILITY

📍 Louisiana, USA

Client: Insurer  
Sector: Oil and Gas  
Service: Damage Assessment



### WIND FARM

📍 United States

Client: Insurer  
Sector: Renewables  
Service: Damage Assessment



### THERMAL POWER PROJECT (2 X 660MW)

📍 India

Client: Insurer  
Sector: Power  
Service: Damage Assessment



### LNG POWER PLANT

📍 Algeria

Client: Adjuster  
Sector: Power  
Service: Damage Assessment

## SERVICE » SCOPE EVALUATION AND REINSTATEMENT COST VERIFICATION



### PRODUCT LIABILITY RECOVERY ACTION

📍 United Kingdom

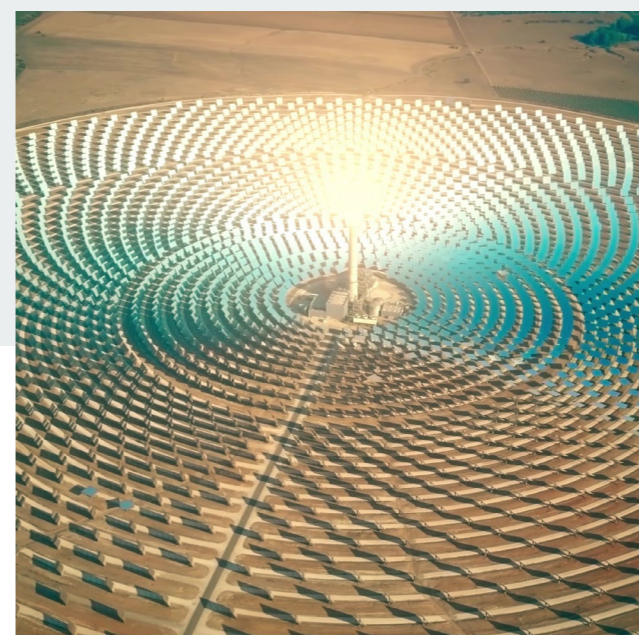
Client: Insurer  
Sector: Commercial / Residential Buildings  
Service: Reinstatement Cost Verification



### HOTEL BUILDING AND ASSOCIATED FACILITIES

📍 Guam

Client: Insurer  
Sector: Commercial / Residential Buildings  
Service: Scope Evaluation



### 150MW CONCENTRATED SOLAR POWER PLANT

📍 Morocco

Client: Insurer  
Sector: Renewables  
Service: Reinstatement Cost Verification



### PETROCHEMICAL COMPLEX

📍 Vietnam

Client: Insurer  
Sector: Oil and Gas  
Service: Scope Evaluation

Images shown are for illustration purposes only and may not be an exact representation of the projects.

# CONTACT US

For advice on your insurance claim or for support in resolving a dispute on a construction, engineering or energy project, contact us on the email address below or visit our website.



## NORTH AMERICA

[USEnquiries@cci-int.com](mailto:USEnquiries@cci-int.com)

### Calgary

+1 905 291 7211

### Chicago

+1 312 754 9090

### Houston

+1 713 999 3332

### Miami

+1 305 735 8244

### New York

+1 929 833 1333

### San Francisco

+1 415 537 2237

### Toronto

+1 905 291 7211

## UK & EUROPE

[EurEnquiries@cci-int.com](mailto:EurEnquiries@cci-int.com)

### Glasgow

+44 1403 217339

### Horsham

+44 1403 217 339

### London

+44 207 929 6310

### Manchester

+44 1257 676 107

## MIDDLE EAST

[MEEnquiries@cci-int.com](mailto:MEEnquiries@cci-int.com)

### Abu Dhabi

+971 2 639 8876

### Dubai

+971 4 320 3396

### Riyadh

+966 54 950 8636

## ASIA PACIFIC

[APEnquiries@cci-int.com](mailto:APEnquiries@cci-int.com)

### Auckland

+64 9520 1929

### Adelaide

+61 8 7093 8730

### Brisbane

+61 7 3532 4012

### Kuala Lumpur

+60 17 645 5948

### Melbourne

+61 3 7019 0992

### Perth

+61 8 6383 6227

### Singapore

+65 6980 8487

### Sydney

+61 2 9290 1495



MORE  
INFO

